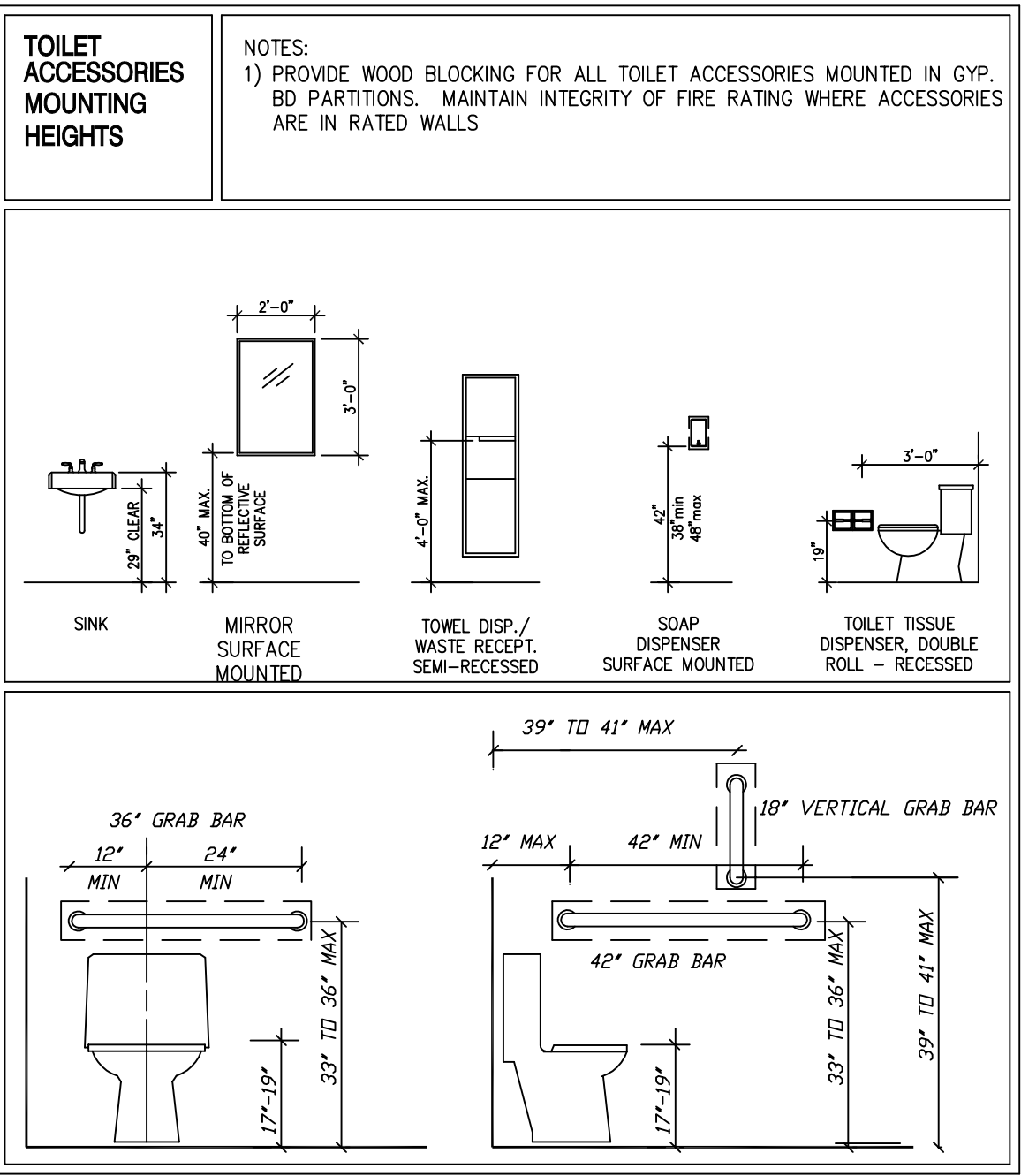


W. Beloit Road PHASE II DEVELOPMENT Mixed Commercial & Residential PHASE I DEVELOPMENT Retail Liquor & Grocery

PROPOSED FLOOR PLAN

SCALE: 1/4" = 1'-0"



TOILET ACCESSORIES MOUNTING HEIGHTS

NOTES:
1) PROVIDE WOOD BLOCKING FOR ALL TOILET ACCESSORIES MOUNTED IN GYP. BD. PARTITIONS. MAINTAIN INTEGRITY OF FIRE RATING WHERE ACCESSORIES ARE IN RATED WALLS

STEVEN ROBERT SHARPE
ARCHITECT
5110 S. LOOMIS ROAD
Waterford, Wisconsin 53185
Ph. (262) 534-3886 message & fax
Cell Ph. (414) 807-4000

Building Alteration Plan
5801-5815 W. Beloit Road
West Allis, Wisconsin

Drawn: SRS

Checked: SRS

Goldie

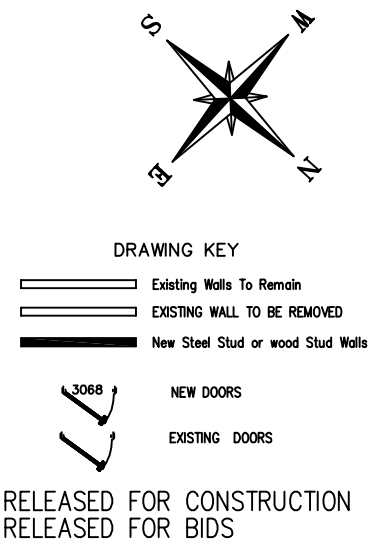
414-736-6580

Date: 18 AUG. '17

Revisions:

Project No.
1708900

Sheet No.
A2
Of 4 Sheets



RELEASED FOR CONSTRUCTION
RELEASED FOR BIDS